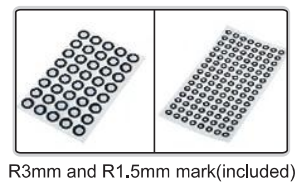




HANDHELD 3D SCANNER CODE LSM-L340



- Dual-layer LED design for clearer deep hole scanning
- AI algorithm module, greatly improve the scanning effect
- Highly efficient scanning with ultra-fast measuring speeds
- Metrology-grade measuring accuracy



SPECIFICATION

Scanning mode	hige-speed scanning	26 crossed blue laser lines
	precision scanning	7 parallel blue laser lines
	deep hole scanning	1 blue laser line
Maximum scanning speed	3800000 measurements/s	
Volume accuracy	0.020mm+0.030mm/m	
Laser class	CLASS II (eye-safe)	
Maximum resolution	0.01mm	
Depth of field	550mm	
Reference distance	300mm	
Maximum scanning field	650mm×550mm	
Output format	.stl.ply .txt	
Interface	USB3.2	
Power supply	100-240V, 50/60HZ	
Dimension (L×W×H)	315×140×85mm	



High-speed scanning: 26 crossed blue laser lines



Precision scanning: 7 parallel blue laser lines



Deep hole scanning: 1 blue laser line

STANDARD DELIVERY

Main unit	1pc
Scanning software	1pc
R1.5mm mark	1000pcs
R3.0mm mark	4000pcs
Calibration plate	1pc

OPTIONAL ACCESSORY

3D measuring software	CMM-CEM-PI
Computer	customized according to measuring requirements

SCANNING SOFTWARE(INCLUDED)

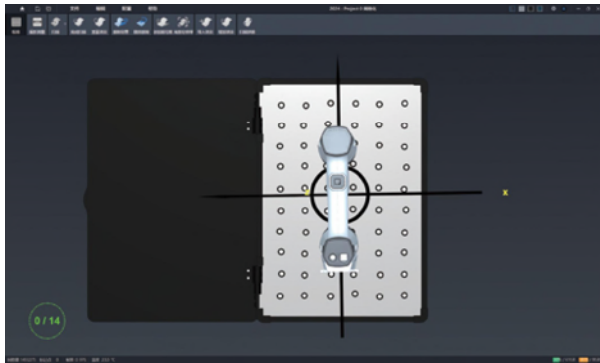
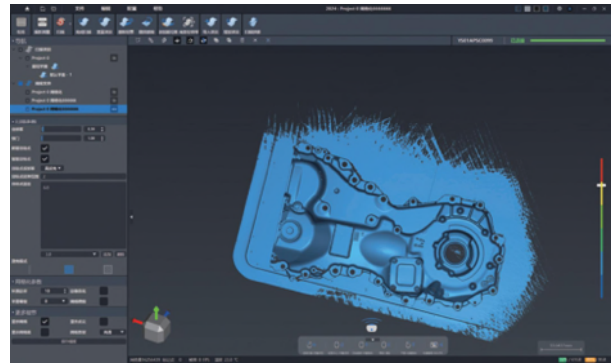
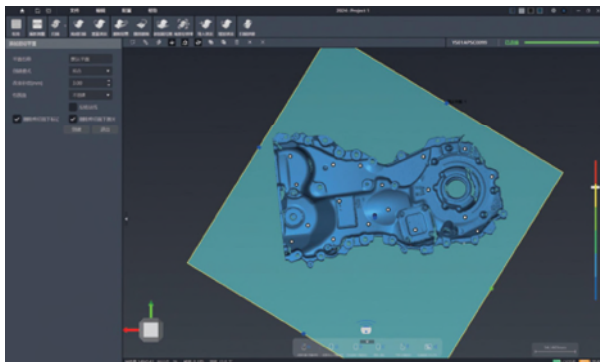


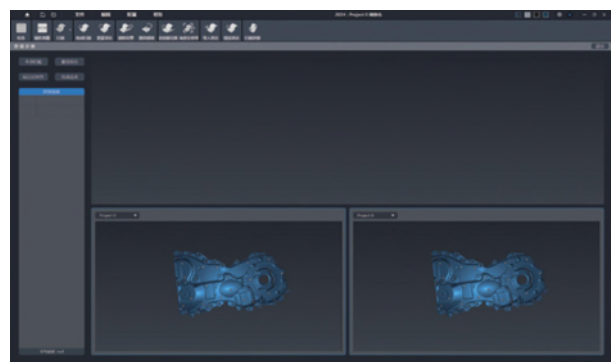
image-guided calibration



point cloud meshing



Invalid area removal



scanning splicing